

Wild Wetlands



Some birds have special adaptations to survive in a wetland habitat. You can see what a bird eats and how it catches its food by the size and shape of its beak.

See if you can match the bird and its beak with the type of food found in the salt marsh.



Brown Pelican

Long, sharp beak with a stretchy pouch for catching larger animals that might be hiding under the water



Dragonfly Nymph



Northern Harrier

Sharp, curved beak for ripping meat!



Anchovy



American Avocet

Long curved beak used for catching insects from the top of the water

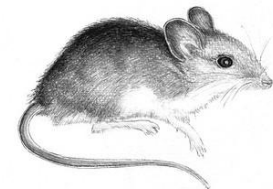


Red-legged Frog



Great Egret

Long straight 'spear beak' used to fish



Salt Marsh Harvest Mouse